



LOTUS  
QUALITY FIRST

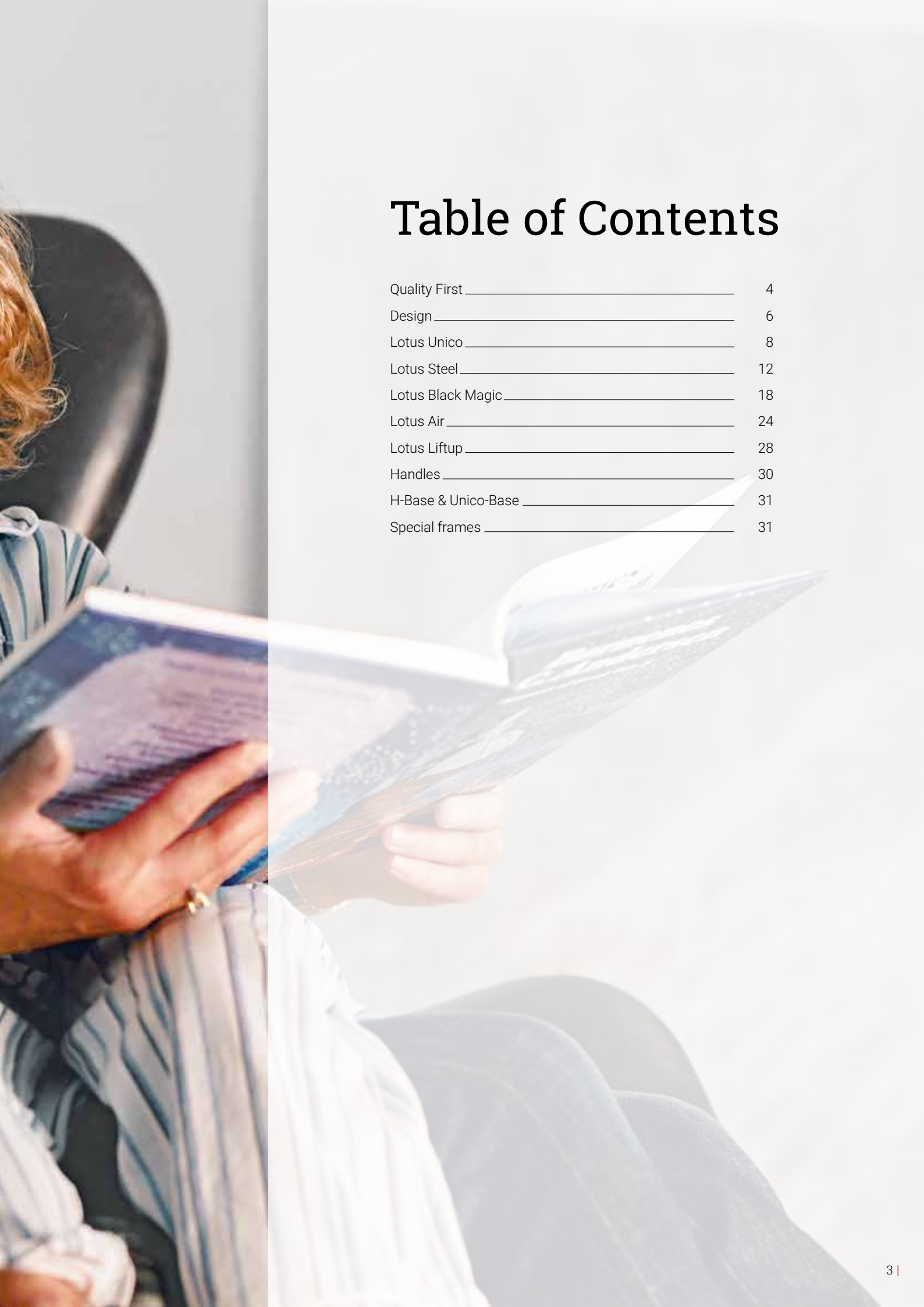
# Quality First

Fireplace inserts

LOTUS







# Table of Contents

Quality First _____	4
Design _____	6
Lotus Unico _____	8
Lotus Steel _____	12
Lotus Black Magic _____	18
Lotus Air _____	24
Lotus Liftup _____	28
Handles _____	30
H-Base & Unico-Base _____	31
Special frames _____	31



# Quality First

– Our way of thinking about fireplace inserts

You know it instinctively. You can always distinguish between a quality product – and one that isn't. Quality speaks its own language, has its own style. You can see it. You can feel it. You can hear it.

This is the feeling we are striving for when you see our fireplace inserts for the first time. And more. We want you to appreciate the flames, the clean combustion, the thickness of the glass, the sound when you open and close the doors and the ingenious and stylish design.

Because when we think fireplace inserts, we basically think quality. In all respects. Our inserts must burn the fuel as

efficiently as possible, and ensure the lowest possible CO<sub>2</sub> emissions. They must be durable and solid, with functional and elegant design.

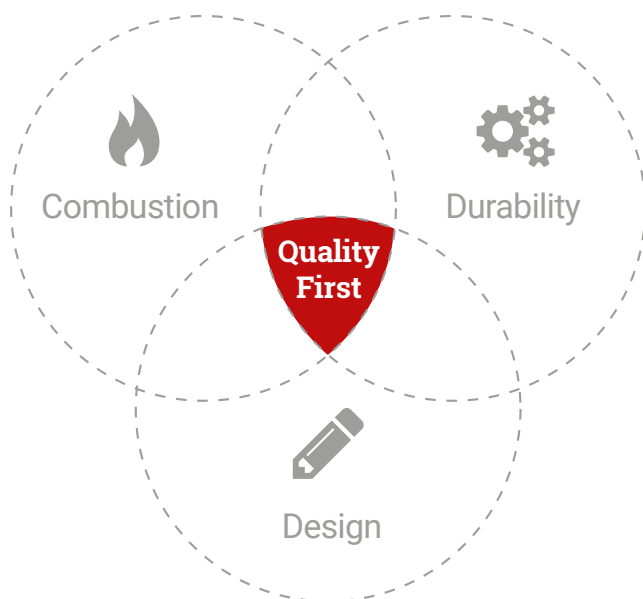
Taking this as our starting point, we have developed and manufactured fireplace inserts for more than 35 years. And which is why our stoves heat thousands of homes in Denmark, Germany, Norway, Sweden, France, Switzerland, the Netherlands, Italy, Greece and the UK.

This catalogue provides an introduction to our fireplace inserts. We hope you enjoy what you find, and that you will see all the options available as an obvious opportunity to get exactly the high-quality stove you are looking.

# LOTUS



When choosing a fireplace insert, there are three important things to consider:



**Combustion:**

- High-temperature stove
- Clean combustion
- High fuel efficiency
- CO<sub>2</sub>-neutral

**Durability:**

- Thick rolled steel
- Heavy-duty doors
- 5 mm door windows
- 10-year warranty

**Design:**

- Functional
- User-friendly
- Elegant
- Danish

### Lotus and quality

Over the years, Lotus has focused on manufacturing products of the highest quality, as illustrated by the picture on the right. Lotus manufactures solid and lasting products, which come with a ten-year warranty. Spare parts and wearing parts are available for 20 years as you are buying a quality product, which is designed to last.



## Danish design and quality

– In every aspect

A fireplace should be easy to use, beautiful to look at and environmentally friendly. Lotus has therefore chosen to prioritise quality and functionality in relation to both our design philosophy and the choice of materials. All our fireplaces are tested at recognised test institutes, guaranteeing that Lotus products always meet the most stringent environmental requirements irrespective of the market in which our products are being sold.

Lotus fireplace inserts are created in close partnership with architects, designers, engineers and suppliers all over the world. We combine Danish design traditions with the best quality components which are sourced worldwide. Our outlook is international, and we seek to create simple and beautiful products which are rooted in both tradition and innovation. Our vision is to create a sense of unity and user-friendliness with complete products that represent a marriage of design, functionality and outstanding technology. Lotus has been producing high-quality fireplaces since 1979 and today our range includes many unique design series. You will always be able to find a fireplace insert that is perfect for your home and your family's needs so you can enjoy time in each other's company in front of the heat and the dancing flames.

### A new product

A new product from Lotus comes into being through meetings between designers, technicians, salespeople and suppliers. Gradually the product begins to take shape, from hand-drawn sketches to computer files and, finally, a well-designed, solid and well-made quality product.

### Responsibility for the environment

Creating moments is one thing, but we also have to consider and shoulder our responsibilities for the long term. For the environment and the world's resources. In this respect, Lotus also assumes considerable responsibility. When you purchase a Lotus product, you can rest assured that high priority has been given to its combustion technology, with good combustion at both low and high output, and where efforts have been made to minimize the impact on the environment in connection with its manufacture etc. Last but not least, the long product lifespan ensures a positive life-cycle assessment in relation to the world's limited resources.

### Numerous business partners

Lotus collaborates with a number of test institutes, professional and industrial bodies etc. to ensure optimum products, environmental considerations etc.





### Be proud of your Lotus and use it correctly

When you use your Lotus fireplace insert, you are helping to take responsibility and do your bit for the environment.

Burning wood is CO<sub>2</sub> neutral, and every year saves Denmark and the rest of the world from burning large volumes of fossil fuels. Wood fuel is part of a natural cycle, with CO<sub>2</sub> being released when the wood rots in the forest or is burnt in a fireplace.

The CO<sub>2</sub> is recaptured when new trees grow. A very short cycle, and one which for fossil fuels takes an infinite length of time. Therefore, you are being environmentally friendly CO<sub>2</sub> neutral and helping to mitigate the greenhouse effect and climate change when you use your Lotus fireplace insert.



### Use what's right

The brochure which you are now holding in your hands is also an environmentally friendly and sustainable publication. Printed on the right paper and sustainably produced. You must also be aware of your responsibilities when using your Lotus fireplace insert. ALWAYS use the right firewood and follow the operating instructions.

Then you can be proud of what you are doing for the environment and the climate. We might not be able to change the world on our own, but together we can.

## Effective utilisation of your firewood

### – Hourly consumption

Fuel consumption, optimum utilisation and efficiency are all words which we encounter to an increasing extent in our daily lives. We must look after our environment and the natural world, which is why it is important that we make the most of the available resources.

Consequently, at Lotus we strive to ensure that you get the maximum heat possible out of every kilogramme of wood that you burn in your Lotus fireplace insert. It is for this reason that we have introduced the term 'Hourly consumption'. This consumption figure is clearly stated on each of our models - see the symbol below.

It shows how much – or rather how little – wood is required for your Lotus fireplace to operate most efficiently and utilize the wood most effectively based on assessments by us and the test institutes. The balance between dynamism and efficiency is, according to our assessment, greatest in relation to consumption per hour. Your Lotus fireplace now has a perfectly optimised combustion chamber. By modulating the air flow more effectively in the combustion chamber combined with the best possible materials, you can be assured of a good and environmentally friendly fuel economy. How 'aggressively' you fire your stove will inevitably have an impact on the fuel economy. Using a lot of fuel and having the air vent wide open is like driving your car with the accelerator pushed to the floor – and is not as efficient as firing with the recommended volumes which results in 'economy driving'. Aggressive firing can result in you losing as much as 20-25% of the fireplace's efficiency. Recent technological developments also become evident when you compare one of the new Lotus fireplaces with an older model. Here, newly developed and fully optimised fireplaces are up to 30% better, benefiting both the environment and your wallet.

So look out for the 'Hourly consumption' figure on each model and you will be surprised at the savings you can expect in terms of fuel consumption. Energy efficiency – benefiting you and, in particular, the environment.



	Chimney draft		Efficiency
	Nominal heat output		Weight
	Operating area		Height
	Room size		Width
<b>Mg/M<sup>3</sup></b>	Particle emissions		Depth
	Hourly consumption		

# Unico

## – Unique models with unique possibilities

The new Lotus UNICO range is an aesthetic master stroke in terms of creating unique solutions for the home. Whether for new builds or existing fireplaces, you now have the opportunity to create the perfect design solution for your home.

With three models – UNICO 11, 12 and 13 – completely new architectural possibilities are feasible. Lotus UNICO offers an exceptional experience of the fire, and the beautifully finished surfaces reflect the superior craftsmanship which has been employed in the manufacture of these fireplace inserts. All models are available as standard with Senotherm matt black high temperature coating, but are also supplied in black Magic. This produces a completely unique look, and the double glazing in the door and side panels ensures comfortable heat emission.

The extra large combustion chamber is made of moulded vermiculite which, while ensuring a long lifespan, also enhances the beautiful play of flames and clean combustion.

A+



↑ 12 Pa

🔥 6 kW

↻ 4-9 kW

📐 30 - 150 m<sup>2</sup>

Mg/M<sup>3</sup> 33

🕒 1,8 kg

📊 80%



EN  
13  
229



NS  
3058  
-1/2

Ergänzung  
nach Art.  
15a-B-VG

Der Luftreinhalte-  
verordnung  
der Schweiz







Unico 11

**A+**

↑ 12 Pa

 122 kg

**Mg/M³** 33

🔥 6 kW

**I** 585 mm

🔄 1,8 kg

🔄 4-9 kW

**H** 744 mm

 80%

🏠 30 - 150 m²

**W** 486 mm

# Unico

## – Functionality and ease-of-use

UNICO is more than just another fireplace insert from Lotus. Every detail contributes to the stoves' functionality and ease-of-use. The elegant Comfort Soft-Close door works in the same way as when your car door is closed tightly yet is just as easy to open.

The brand new combustion mechanism is easily managed with the smart stepped air-control handle. The air vent is neatly integrated into the front of the stove, and is the product of years of development work and part of Lotus's unique ECO Green Burn Technology. It gives up to 30 per cent cleaner combustion in relation to older Lotus stoves, and means that you will use less fuel and achieve considerable cost savings – while also benefiting the environment.

A Unico-Base has been developed for all models in the series to facilitate installation. The base allows you to raise or lower the stove to the correct height before installation.

This is a range of fireplace inserts that must be seen and felt to appreciate its unique possibilities.



EN  
13  
229



NS  
3058  
-1/2

Ergänzung  
nach Art.  
15a-B-VG

Der Luftreinhalte-  
verordnung  
der Schweiz



↑	12 Pa
🔥	6 kW
↻	4-9 kW
📏	30 - 150 m²
Mg/M³	33
⌚	1,8 kg
📊	80%



Unico 12

↑	12 Pa	KG	122 kg	Mg/M³	33
🔥	6 kW	I	585 mm	⌚	1,8 kg
↻	4-9 kW	H	744 mm	📊	80%
📏	30 - 150 m²	🔧	486 mm		



Unico 13

↑	12 Pa	KG	122 kg	Mg/M³	33
🔥	6 kW	I	585 mm	⌚	1,8 kg
↻	4-9 kW	H	711 mm	📊	80%
📏	30 - 150 m²	🔧	486 mm		





## Steel – H470 W

– Dependable design in grey or black steel

A+



This fireplace insert with a steel frontage in black or grey is built according to the best principles of craftsmanship in an attractive and functional design. The elegant control handle integrates discreetly and beautifully so that the insert appears as a harmonic, flat surface in the room.

The large glass door affords a fantastic view of the flames and creates a sense of cosiness and warmth.

↑ 12 Pa

🔥 7 kW

↻ 3-10 kW

📐 40 - 170 m²

**Mg/M³** 19

🔄 2/2,5 kg

📊 80,5%



EN  
13  
229



NS  
3058  
-1/2

Der Luftreinhalte-  
verordnung  
der Schweiz





# Steel

– Lotus H570



A+





H370 Petite

H470

**A**

**A+**

NS  
3058  
-1/2

NS  
3058  
-1/2

Ergänzung  
nach Art.  
15a-B-VG

H370 Petite/H470

↑ 12 Pa    87 / 95 kg    **Mg/M³** 28 / 18  
 🔥 5,8 / 6 kW    **I** 529 mm    ⌚ 1,5 / 1,7 kg  
 ⌚ 3-7 kW    **H** 736 mm    77 / 84%  
 📐 30 - 110 / 120 m²    340 / 440 mm



**A+**

NS  
3058  
-1/2

H470 W

↑ 12 Pa    120 kg    **Mg/M³** 19  
 🔥 7 kW    **I** 529 mm    ⌚ 2 / 2,5 kg  
 ⌚ 3-10 kW    **H** 948 mm    80,5%  
 📐 40 - 170 m²    440 mm



**A+**

NS  
3058  
-1/2

Ergänzung  
nach Art.  
15a-B-VG

H570

↑ 12 Pa    111 kg    **Mg/M³** 18  
 🔥 6 kW    **I** 654 mm    ⌚ 1,8 kg  
 ⌚ 3-8 kW    **H** 756 mm    84%  
 📐 30 - 130 m²    440 mm



**A+**

NS  
3058  
-1/2

H570 W

↑ 12 Pa    154 kg    **Mg/M³** 19  
 🔥 7 kW    **I** 654 mm    ⌚ 2 / 2,5 kg  
 ⌚ 4-11 kW    **H** 1088 mm    80,5%  
 📐 45 - 190 m²    440 mm



**A+**

H570 T

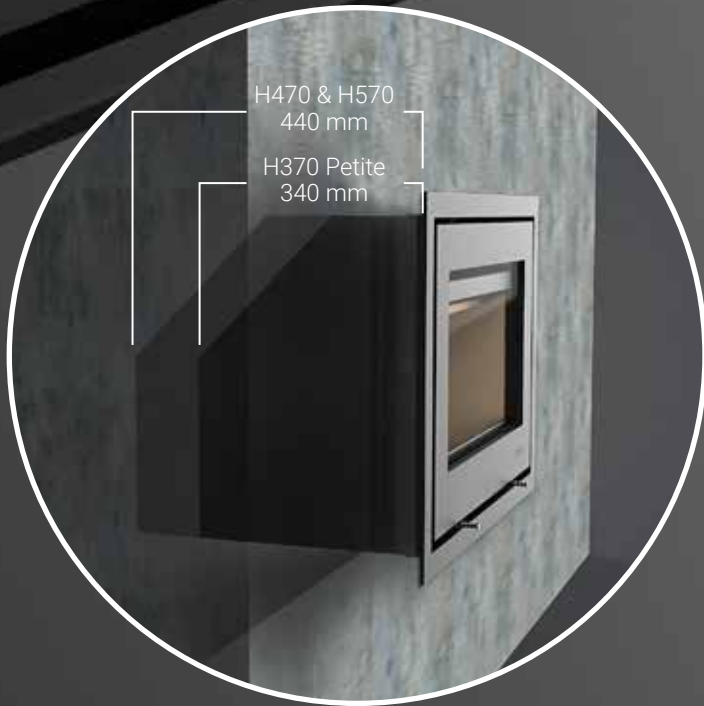
↑ 12 Pa    155 kg    **Mg/M³** 29  
 🔥 6 kW    **I** 654 mm    ⌚ 2 kg  
 ⌚ 4-9 kW    **H** 756 mm    80,5%  
 📐 30 - 130 m²    590 mm



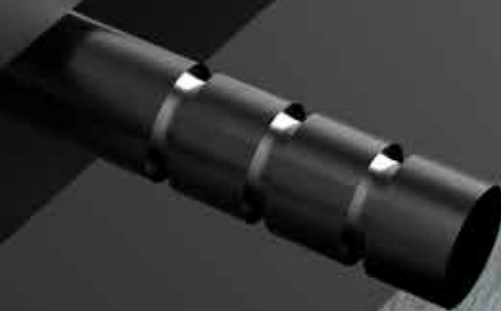
**A+**

H700

↑ 12 Pa    96 kg    **Mg/M³** 29  
 🔥 6 kW    **I** 784 mm    ⌚ 1,7 kg  
 ⌚ 3-7 kW    **H** 515 mm    83%  
 📐 30 - 120 m²    440 mm



LOTUS





# Black Magic – H470 W

## – Black gold

This fireplace insert with a black glass section frontage creates a look of exclusivity. The elegant appearance of the frontage with its reflective surface is enchanting. The discreet control handle integrates beautifully beneath the door so that the insert appears as a harmonic, flat surface. All in all, this frontage will create a spectacular effect in any home.

Besides the H470W, it is also available in H470, H570, H700, H570 Tunnel, H570W and H370 Petite as Black Magic models.

A+



↑ 12 Pa

🔥 7 kW

🔄 3-10 kW

📏 40 - 170 m<sup>2</sup>

**Mg/M<sup>3</sup>** 19

🔄 2/2,5 kg

📊 80,5%



EN  
13  
229



NS  
3058  
-1/2

Der Luftreinhalte-  
verordnung  
der Schweiz





# Black Magic

– Lotus H700 Black Magic



A+



H370 Petite

**A**

NS  
3058  
-1/2

H470

**A+**

NS  
3058  
-1/2

Ergänzung  
nach Art.  
15a-B-VG

H370 Petite/H470 Black Magic

↑ 12 Pa    **KG** 87 / 95 kg  
 🔥 5,8 / 6 kW    **I** 529 mm  
 ⚙️ 3-7 kW    **H** 736 mm  
 📐 30 - 110 / 120 m²    **L** 340 / 440 mm

**Mg/M³** 28 / 18  
 ⌚ 1,5 / 1,7 kg  
 📊 77 / 84%



**A+**

NS  
3058  
-1/2

H470 W Black Magic

↑ 12 Pa    **KG** 120 kg    **Mg/M³** 19  
 🔥 7 kW    **I** 529 mm    ⌚ 2 / 2,5 kg  
 ⚙️ 3-10 kW    **H** 948 mm    📊 80,5%  
 📐 40 - 170 m²    **L** 440 mm



**A+**

NS  
3058  
-1/2

Ergänzung  
nach Art.  
15a-B-VG

H570 Black Magic

↑ 12 Pa    **KG** 111 kg    **Mg/M³** 18  
 🔥 6 kW    **I** 654 mm    ⌚ 1,8 kg  
 ⚙️ 3-8 kW    **H** 756 mm    📊 84%  
 📐 30 - 130 m²    **L** 440 mm



**A+**

NS  
3058  
-1/2

H570 W Black Magic

↑ 12 Pa    **KG** 154 kg    **Mg/M³** 19  
 🔥 7 kW    **I** 654 mm    ⌚ 2 / 2,5 kg  
 ⚙️ 4-11 kW    **H** 1088 mm    📊 80,5%  
 📐 45 - 190 m²    **L** 440 mm



**A+**

H570 T Black Magic

↑ 12 Pa    **KG** 155 kg    **Mg/M³** 29  
 🔥 6 kW    **I** 654 mm    ⌚ 2 kg  
 ⚙️ 4-9 kW    **H** 756 mm    📊 80,5%  
 📐 30 - 130 m²    **L** 590 mm



**A+**

H700 Black Magic

↑ 12 Pa    **KG** 96 kg    **Mg/M³** 29  
 🔥 6 kW    **I** 784 mm    ⌚ 1,7 kg  
 ⚙️ 3-7 kW    **H** 515 mm    📊 83%  
 📐 30 - 120 m²    **L** 440 mm

LOTUS

# Air

– Lotus H570 W Air



A+



# Air – H470

– Spread the warmth and cosiness to several rooms

Lotus fireplace inserts with an in-built ventilator – i.e. the Air model – effectively create the option of distributing the heat between several rooms. Cold air is sucked in through the vent beneath the door and the warmed air is released from the vent above the door or fed via tubes to other rooms in the house. The ventilator can be regulated steplessly and can shift up to 300 m<sup>3</sup> air per hour. This provides optimum warmth throughout the home.

The following models are available with the ventilator: H470, H570, H470 W and H570 W and supplied with a steel frontage in black or grey.



↑ 12 Pa

🔥 6 kW

↻ 3-9 kW

📐 40 - 140 m<sup>2</sup>

**Mg/M<sup>3</sup>** 30

🔄 1,7 kg

📊 78%



EN  
13  
229



NS  
3058  
-1/2

Der Luftreinhalte-  
verordnung  
der Schweiz





**A<sup>+</sup>**

Ergänzung  
nach Art.  
15a-B-VG

H470 Air

↑ 12 Pa	KG 107 kg	Mg/M <sup>3</sup> 18
🔥 6 kW	I 654 mm	⌚ 1,7 kg
🔄 3-9 kW	H 736 mm	📊 84%
📐 40 - 140 m <sup>2</sup>	📏 440 mm	



**A<sup>+</sup>**

H470 W Air

↑ 12 Pa	KG 135 kg	Mg/M <sup>3</sup> 19
🔥 7 kW	I 654 mm	⌚ 2 / 2,5 kg
🔄 3-10 kW	H 948 mm	📊 80,5%
📐 40 - 190 m <sup>2</sup>	📏 440 mm	



**A<sup>+</sup>**

Ergänzung  
nach Art.  
15a-B-VG

H570 Air

↑ 12 Pa	KG 124 kg	Mg/M <sup>3</sup> 18
🔥 6 kW	I 789 mm	⌚ 1,8 kg
🔄 3-9 kW	H 756 mm	📊 84%
📐 40 - 150 m <sup>2</sup>	📏 440 mm	



**A<sup>+</sup>**

H570 W Air

↑ 12 Pa	KG 171 kg	Mg/M <sup>3</sup> 19
🔥 7 kW	I 789 mm	⌚ 2 / 2,5 kg
🔄 4-11 kW	H 1088 mm	📊 80,5%
📐 40 - 210 m <sup>2</sup>	📏 440 mm	



# Liftup

– Lotus H486 & H586



## Liftup

A+

– A greater experience of the fire

The new Liftup series is available in two models, the H486 and H586. This series is unique because it is completely built-in and because of its body size. This provides you with a beautiful flame profile and makes your whole wall come alive.

Lotus technicians have worked in close collaboration with architects and engineers to develop the large door's mechanics, so that it opens easily and stylishly. This makes daily use easy and ensures that the door glides open soundlessly. The series is available with two different lengths of handles and in two colours – stainless steel or black.

For easy installation and fitting, the stove bodies are equipped with built-in adjustable feet.



EN  
13  
229



Der Luftreinhalte-  
verordnung  
der Schweiz





H486

↑ 12 Pa    🔥 8,9 kW    ↻ 4,5-11 kW    📏 40 - 180 m<sup>2</sup>  
**Mg/M<sup>3</sup>** 29    ⌚ 2,5 kg    📊 82%

H586

↑ 12 Pa    🔥 11 kW    ↻ 5-13 kW    📏 50 - 200 m<sup>2</sup>  
**Mg/M<sup>3</sup>** 15    ⌚ 3 kg    📊 80%

# Plenty of options and easy to use

All the inserts in the H series can be matched with a choice of handles to suit your style.

All handles are made to give you optimal ease of use.



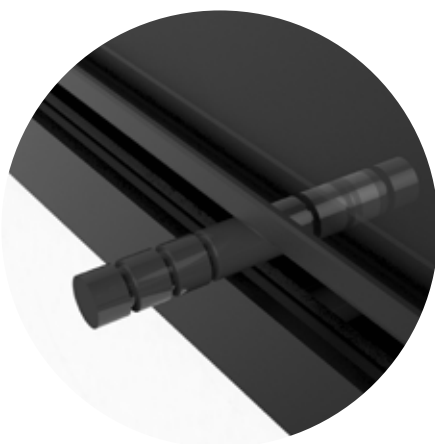
Modern Grey H



Modern Black H



Classic H



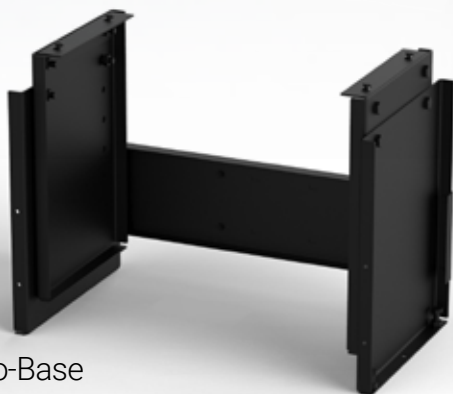
Classic Grey H



Classic Black H



## H-base & Unico-Base



Unico-Base



H-Base

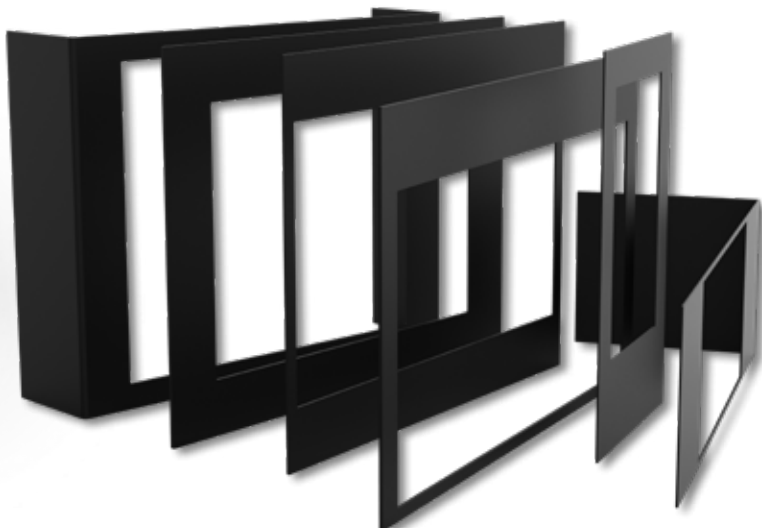
For most of our inserts a base can be chosen, a base that can be anchored in the floor and on which the insert can be mounted.

Then it's easy to build around the insert, no matter what material you use.

## Special frames

Lotus offers an extensive selection of specially adapted frames to create the perfect installation in your home and complete the finish. Lotus offers an extensive range of specially adapted frames to create the perfect installation in your home and complete the finish. The frames can be produced in a fold-down version so that they become an integral part of the room and the rest of your interior decoration. There are countless options for creating a totally unique solution.

The frames can be supplied for most models of fireplace insert and come with black, grey or Black Magic surfaces. Find out more from your local dealer about the options and sizes available and how you can find the perfect solution for your home.





The catalogue which you are holding in your hands is also an environment-friendly publication. Printed on FSC®-certified paper.



LOTUS HEATING SYSTEMS AS · Tlf. +45 6323 7070 · [www.lotusstoves.com](http://www.lotusstoves.com) · Email [info@lotusstoves.com](mailto:info@lotusstoves.com)



See all the stoves here